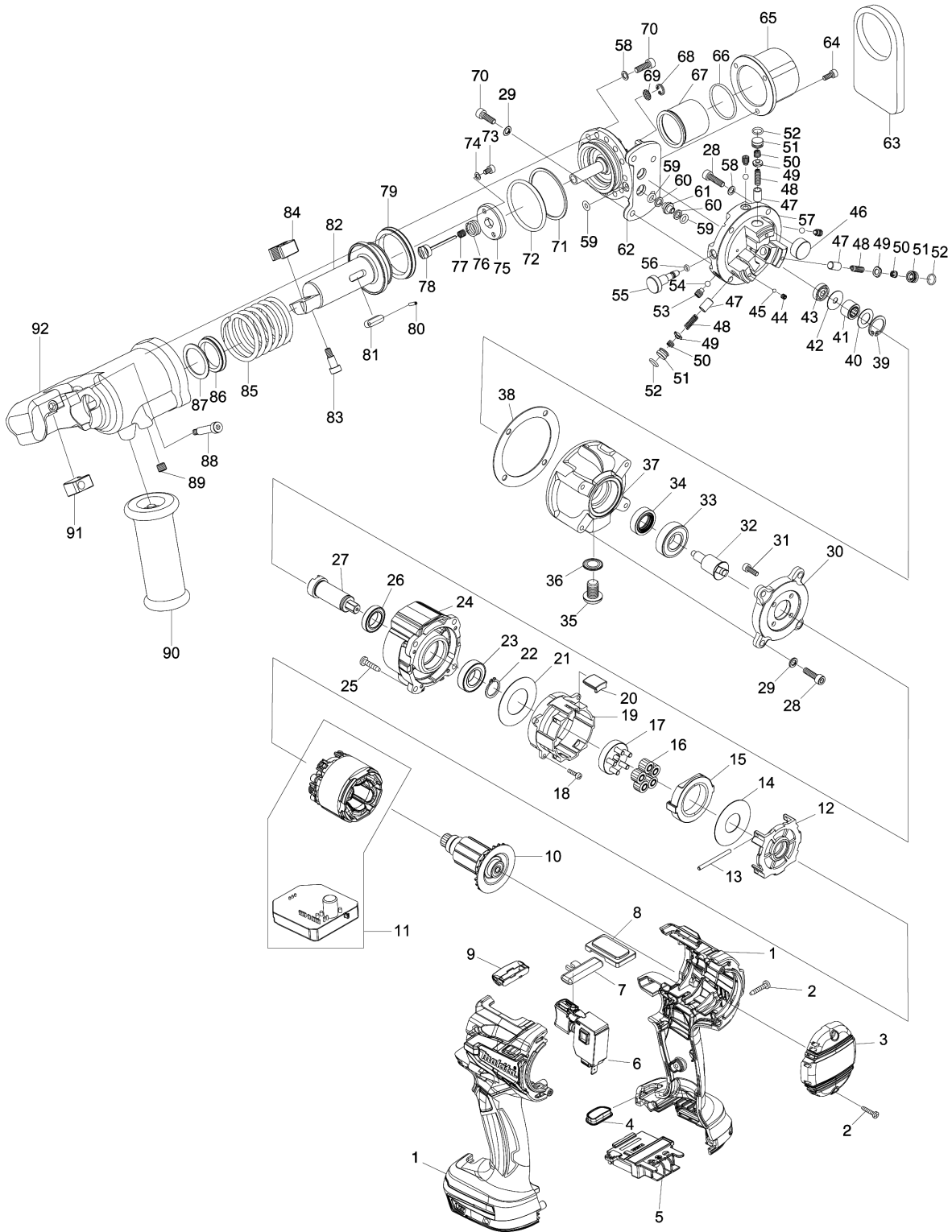


Model No.DSC121 CORDLESS THREADED ROD CUTTER



Model No.DSC121 CORDLESS THREADED ROD CUTTER

Item	Parts No.	Description	I/C	Qty	New/Old	Opt. 1	Opt. 2	Note
001	183C36-3	HOUSING SET		1				
C10	263005-3	RUBBER PIN 6		2				
002	266130-9	TAPPING SCREW BIND PT 3X16		9				
003	455011-4	REAR COVER		1				
004	142263-3	INDICATOR PANEL COMPLETE		1				
005	643874-2	TERMINAL		1				
006	650710-5	SWITCH C3JW-4B		1				
007	451162-1	LOCK LEVER		1				
008	457799-2	COVER		1				
009	620283-2	LED CIRCUIT		1				
010	619336-2	ROTOR		1				
011	629116-8	STATOR COMPLETE		1				
012	455005-9	MOTOR BRACKET		1				
013	256375-7	ROD 3		2				
014	253401-3	FLAT WASHER 18		1				
015	221558-8	INTERNAL SPUR GEAR 41		1				
016	226193-7	SPUR GEAR 13		5				
017	144591-2	CARRIER COMPLETE		1				
018	911017-7	PAN HEAD SCREW M3X12		4				
019	455006-7	GEAR CASE		1				
020	422168-6	RUBBER SEAL		1				
021	253888-9	FLAT WASHER 25		1				
022	961055-9	RETAINING RING S-15		1				
023	211234-2	BALLBEARING 6902LLB		1				
024	319616-3	GEAR HOUSING		1				
025	266326-2	TAPPING SCREW 4X18		4				
026	211233-4	BALL BEARING 6802LLB		1				
027	326996-0	SPINDLE		1				
028	SC07512050	BOLT HB5X18		8				
029	SC07610030	WASHER SW5		8				
030	SC03220120	MOTOR FLANGE		1				
031	SC07511080	BOLT HB4X12		4				
032	SC00000486	ECCENTRIC SHAFT T45417		1				
033	SC00000050	BALL BEARING 6002RU		1				
034	SC06504050	OIL SEAL UE15257		1				
035	SC07550100	HEX. SOCKET BUTTON BOLT HBB10X		1				
036	SC00000489	SEAL WASHER WF10171.6		1				
037	SC03210040	PIMP CASE		1				
038	SC04601550	LINER B		1				
039	SC00000487	STOP RING H19		1				
040	SC00000465	NEEDLE BEARING HOLDER A T45421		1				

Please order the parts with part number.

Print Date 27/3/2020

Model No.DSC121 CORDLESS THREADED ROD CUTTER

Item	Parts No.	Description	I/C	Qty	New/Old	Opt. 1	Opt. 2	Note
041	SC00000466	NEEDLE BEARING #RNAF81510		1				
042	SC00000467	NEEDLE BEARING HOLDER B T45422		1				
043	SC07100030	BALL BEARING 625		1				
044	SC07521010	BOLT HS4X4		3				
045	SC07900000	STEEL BALL 3		3				
046	SC00000020	MAGNET		1				
047	SC03500380	PISTON		3				
048	SC00000022	PISTON RETURN SPRING		3				
049	SC00000464	CHECK VALVE #T43445N1		3				
050	SC00000468	SPRING #43449N2		3				
051	SC03500540	METAL PACKING		3				
052	SC06505590	O RING S-8		3				
053	SC07523020	BOLT HS6X8		3				
054	SC07900070	STEEL BALL D3/16		3				
055	SC03503900	RETURN VALVE		1				
056	SC06505300	O RING S4		1				
057	SC03207610	MAIN PUMP		1				
058	SC00000067	WASHER 5		17				
059	SC06505010	O RING P6		5				
060	SC06503580	BACKUP RING P6		4				
061	SC03500750	O-RING GUIDE		2				
062	SC03515230	FLANGE FOR CUTTER HEAD		1				
063	SC04500710	BALANCE STAND		1				
064	SC07511010	HEX. SOCKET HEAD BOLT 4X8		3				
065	SC04500690	LEVELER COVER		1				
066	SC06505570	O-RING S31.5		1				
067	SC04500680	OIL LEVELER COVER		1				
068	SC07410110	STOP RING H10		1				
069	SC03301860	FILTER		1				
070	SC00000098	HEX. SOCKET HEAD BOLT 5X15		17				
071	SC06503600	BACKUP RING G45		1				
072	SC06505460	O-RING G45		1				
073	SC00000060	HEX. SOCKET HEAD BOLT 4X6		2				
074	SC00000068	WASHER 4		2				
075	SC00000481	STOPPER PLATE #45423		1				
076	SC00000471	SPRING #T45378		1				
077	SC00000023	RELEASE VALVE SPRING		1				
078	SC03500140	RELEASE VALVE		1				
079	SC00000485	PACKING OSI50406		1				
080	SC00000070	SPRING PIN 2.5X10		2				
081	SC03700080	KEY		2				

Model No.DSC121 CORDLESS THREADED ROD CUTTER

Item	Parts No.	Description	I/C	Qty	New/Old	Opt. 1	Opt. 2	Note
082	SC03111710	CUTTER ROD		1				
083	SC06602200	BOLT		1				
084	SC09002720	CUTTER M12		1				
D10		INC. 91						
085	SC04000400	RETURN SPRING		1				
086	SC06500170	SKY PACKING		1				
087	SC06503590	BACKUP RING TBC-26X34X1		1				
088	SC06602190	BOLT 6.5X25		1				
089	SC07850050	PLUG		1				
090	SC09004210	HANDLE SET		1				
091	SC09002720	CUTTER M12		1				
D10		INC. 84						
092	SC03104210	CUTTER HEAD		1				
A01	783202-0	HEX. WRENCH 4		1				
A02	783204-6	HEX. WRENCH 6		1				
A03	SC00000106	OIL 35CC		1				
A04	821552-6	CONNECTOR PLASTIC CASE (TYPE4)		1				
A05	SC09002700	CUTTER M8		1				
A06	SC09002710	CUTTER M10		1				

Please order the parts with part number.

Print Date 27/3/2020